



EDUCATION

North Dakota State University - Fargo, ND
Master of Architecture - May 2015
Bachelor of Science in Architecture - May 2014
Peter F. McKenzie Award Finalist- Thesis Design

Dunwoody College of Technology - Minneapolis, MN.
Associate of Applied Science in
Architectural Drafting and Estimating - June 2010

PROFICIENT

Revit, AutoCAD, SketchUp, Bluebeam,
Adobe Suite, NewForma, Lumion,
Maxwell, Microsoft Suite,
Keynote manager, Webex.

Hand drafting, Sketching, Renderings
and Model Making

Construction Documents, RFIs,
Submittals

OBJECTIVE

To obtain a challenging
architectural career, that allows for
the cultivation of my knowledge in
design and sustainability.

EFFICIENT

E-specs
Navisworks
International Building Code
Facility Guidelines Institute
ADA Accessibility Guidelines
National Fire Protection Association

BASIC

Makerbot 3D Printing and laser
cutting

Master and Uniformat, Project
Management and Estimating

Specifications

WORK HISTORY

DAVIS PARTNERSHIP ARCHITECTS ARCHITECTURAL INTERN 2015 - 2018

Avon, Colorado - Emergency Department
Torrington, Wyoming - Sterile Processing
Torrington, Wyoming - Physical Therapy
Leadville, Colorado - Core and Shell
Denver, Colorado - PACU
Englewood, Colorado - Medical Office Building
Craig, Colorado - Medical Office Building
Craig, Colorado - OB/GYN
Erie, Colorado - Medical Office Building

PAST

**NDSU TRIO - OFFICE ASSISTANT
TRIO UPWARD BOUND - SPANISH TA**

WORK HISTORY

JLG ARCHITECTS STUDENT INTERN 2013 SUMMER 2015 ACADEMIC YEAR

Ward County Office Building
Dale Kilwein Memorial
Marketing for AIA Award Submittal
Magazine Article

COMMUNITY INVOLVEMENT

Project Angle Heart - (2017)
Food for Thought - (2017)
Habitat for Humanity (2017)
Habitat for Humanity (2016)
Elementary Holiday Design - (2016)
CAL - (2015)

REFERENCES

J.D. Dreyer - Principal
Miguel Seda - Senior Associate
Kevin Pasewalk - Senior Architect



ESAU RODRIGUEZ
LEED GREEN ASSOCIATE, CDT

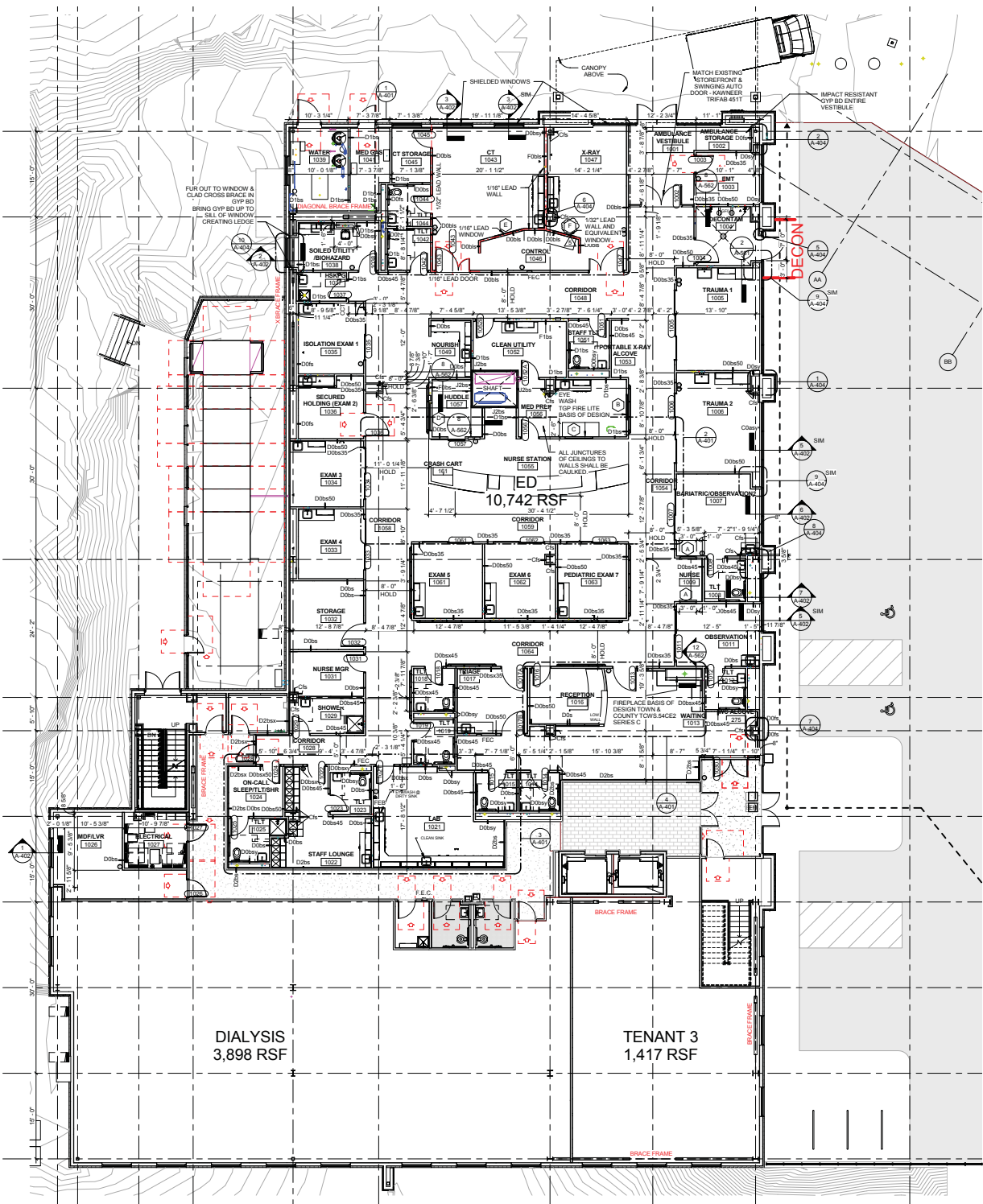
651. 968. 6700
Rodesau@gmail.com
www.rodesau.wix.com/esau

DESIGN
PORTFOLIO

BUCK CREEK EMERGENCY DEPARTMENT
AVON, COLORADO
10,000 sf

JOB RESPONSIBILITIES

- 1. Introduction to FGI
- 2. Interior Renderings
- 3. Navisworks Collision Report
- 4. Coordinate with Consultants
- 5. Addendums
- 6. RFIs
- 7. Submittals



RENDERING

Reception



PHOTO



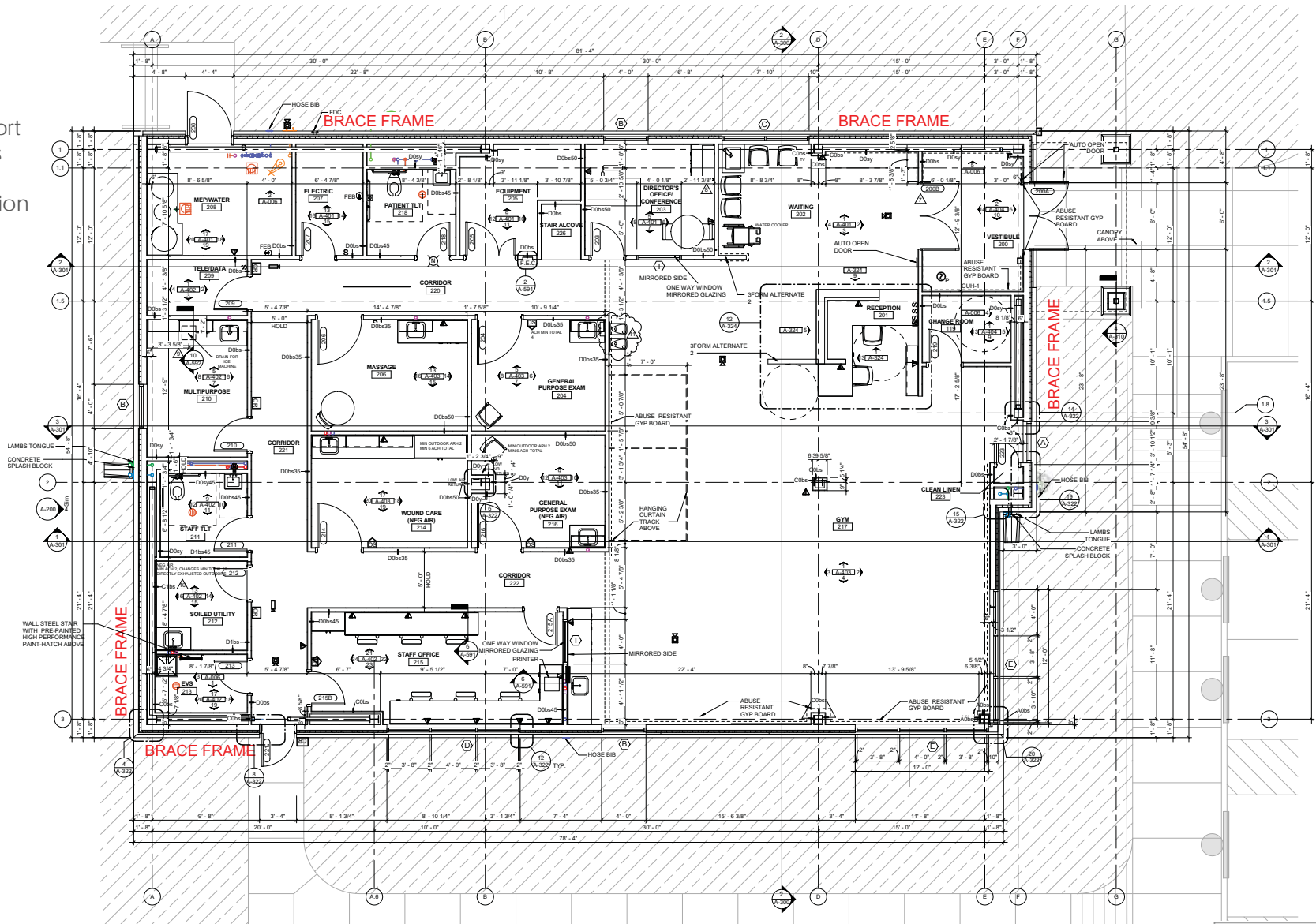
Nurse Station



COMMUNITY HOSPITAL - PHYSICAL THERAPY
TORRINGTON, WYOMING
4,432 sf

JOB RESPONSIBILITIES

- 1. Design Building
- 2. Exterior Renderings
- 3. Coordination with
 - a. Owner
 - b. User Groups
 - c. Consultants
 - d. Contractor
- 4. Navisworks Collision Report
- 5. Construction Documents
- 6. Addendums
- 7. Construction Administration



TORRINGTON COMMUNITY HOSPITAL PHYSICAL THERAPY



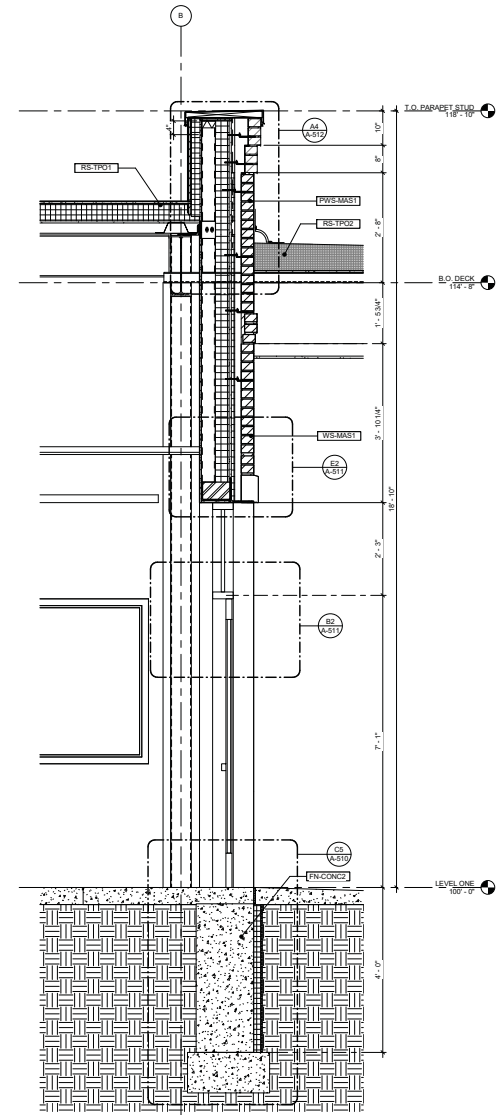
ST. VINCENT REPLACEMENT HOSPITAL
LEADVILLE, COLORADO
20,000 sf

JOB RESPONSIBILITIES

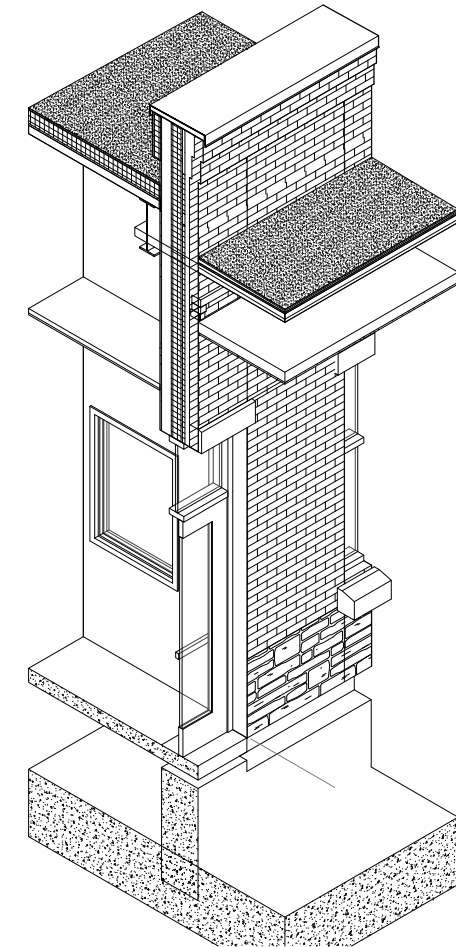
1. Core and Shell Design
2. Material Research
3. Wall Sections
4. Section Details
5. Plan Details
6. Code Study



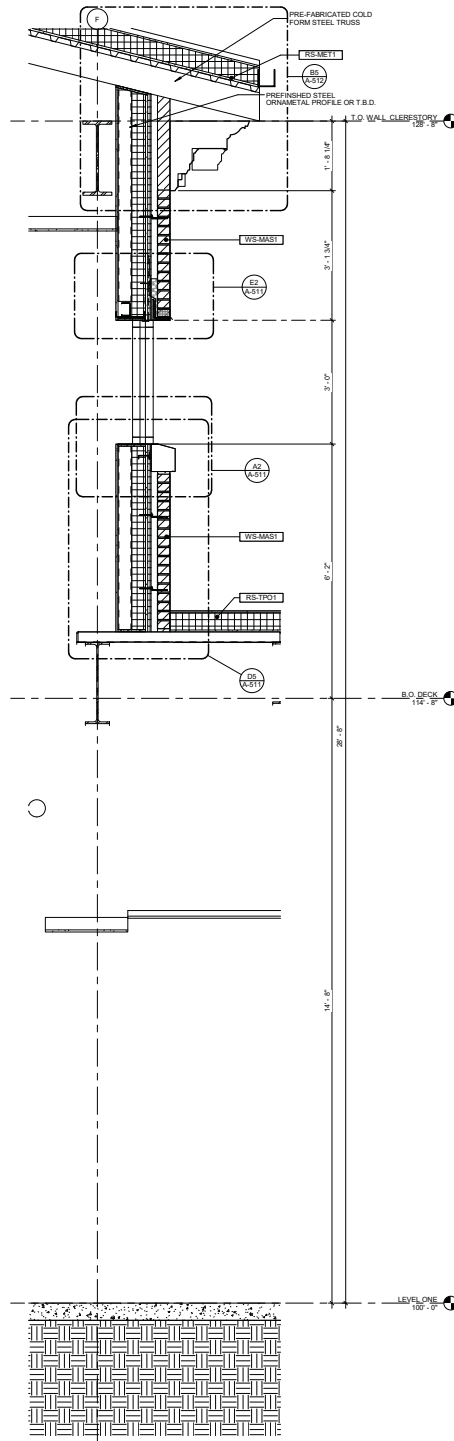
ST. VINCENT REPLACEMENT HOSPITAL
WALL SECTIONS



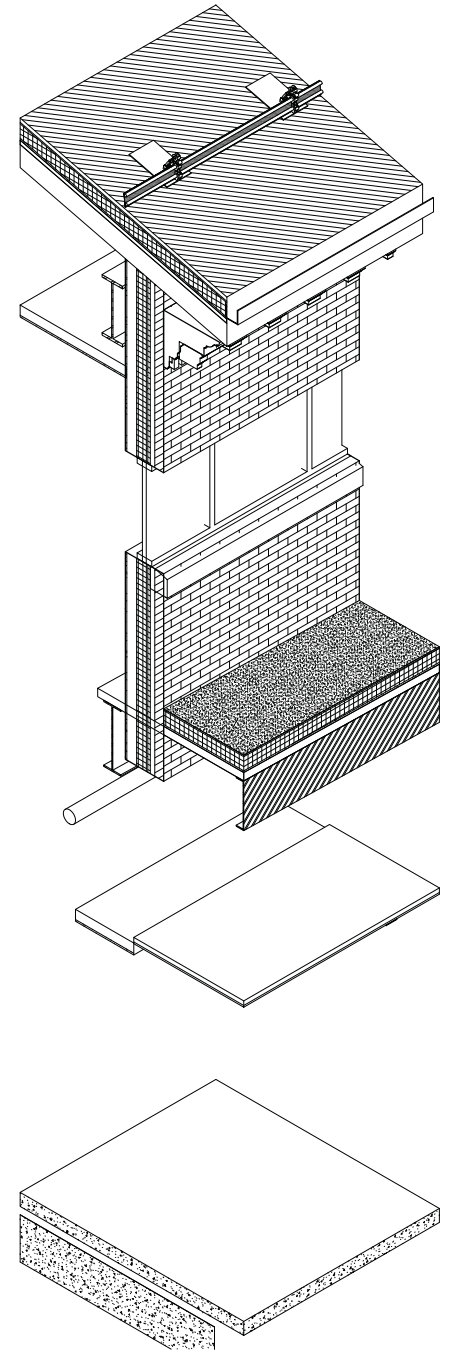
WALL SECTION - CANOPY CONNECTION AT ENTRY
3/4" = 1'-0"



WALL SECTION ISO - CANOPY CONNECTION AT ENTRY



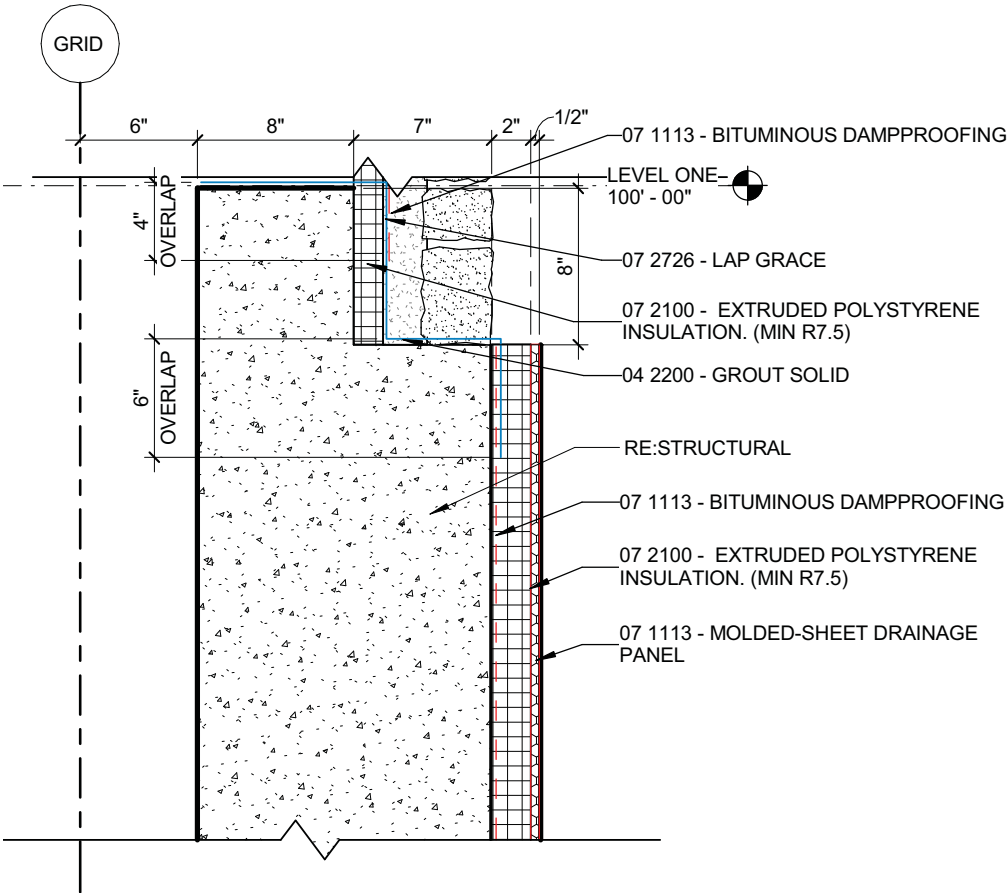
WALL SECTION - MASONRY WALL AND CLEARSTORY WINDOW
3/4" = 1'-0"



WALL SECTION ISO - MASONRY WALL AND CLEARSTORY WINDOW

ST. VINCENT REPLACEMENT HOSPITAL
BUILDING ASSEMBLIES

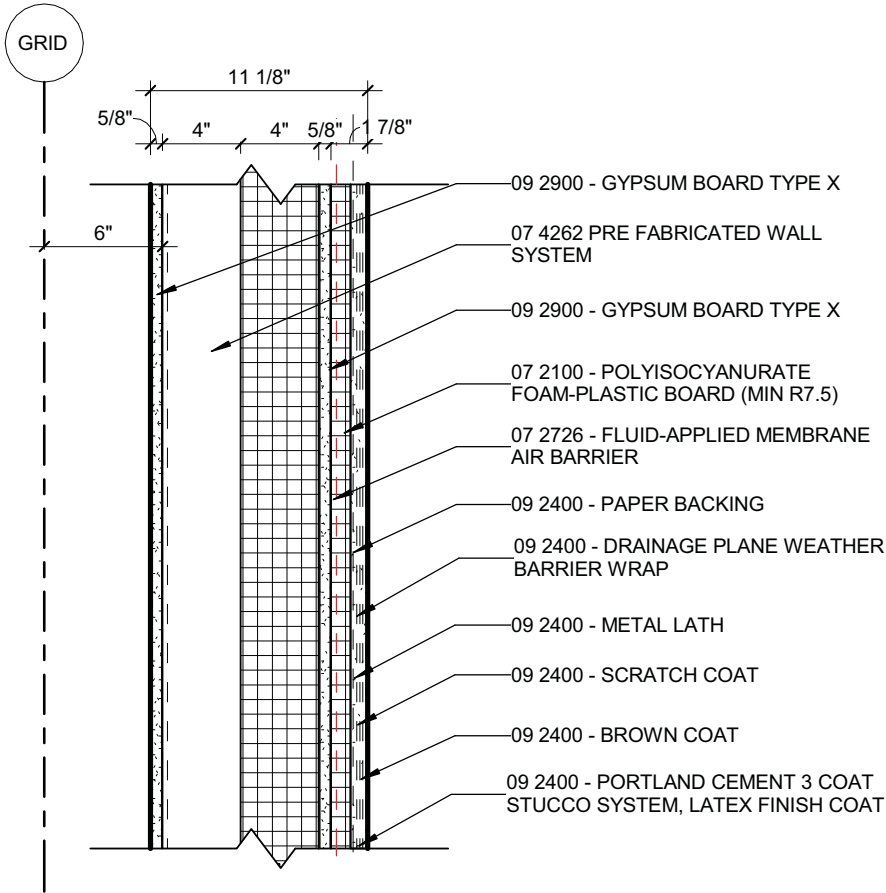
Concrete Foundation Assembly



FOUNDATION WALL SECTION
SECTION VIEW

FN-CONC1

Stucco Wall Assembly

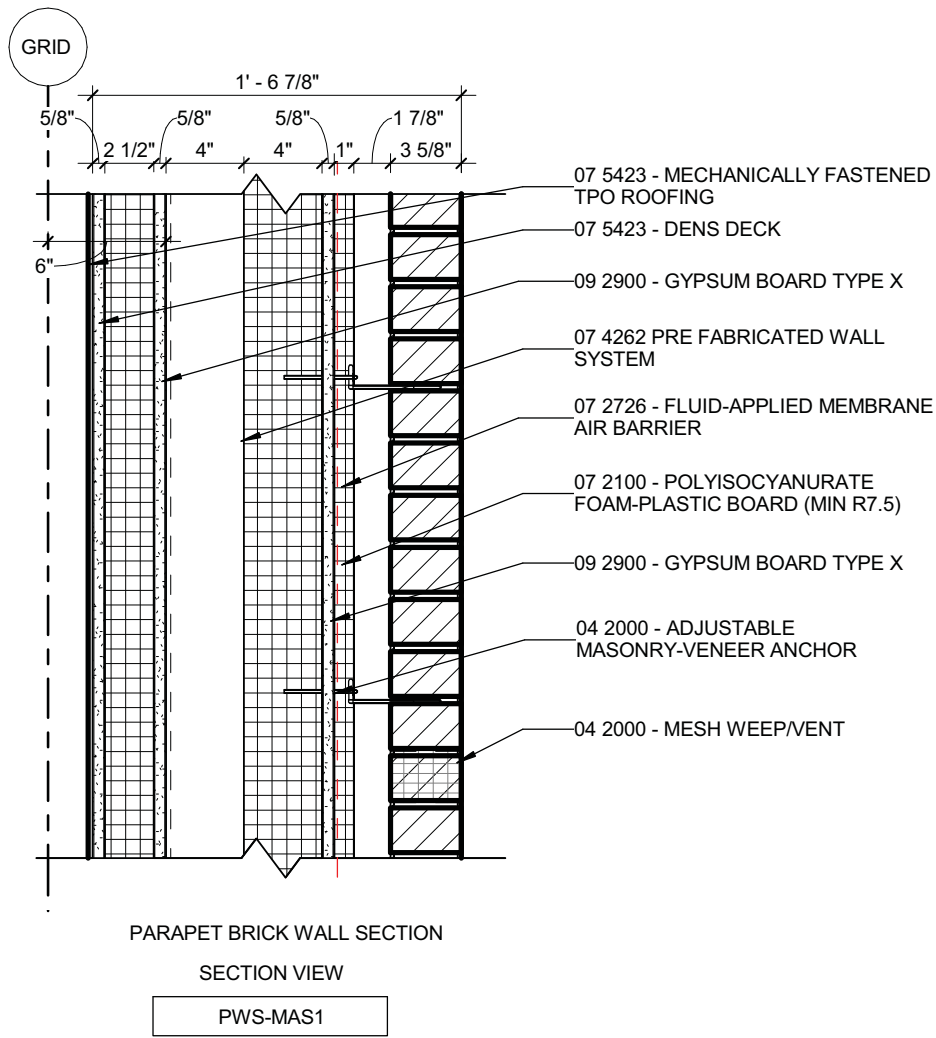


STUCCO WALL SECTION
SECTION VIEW

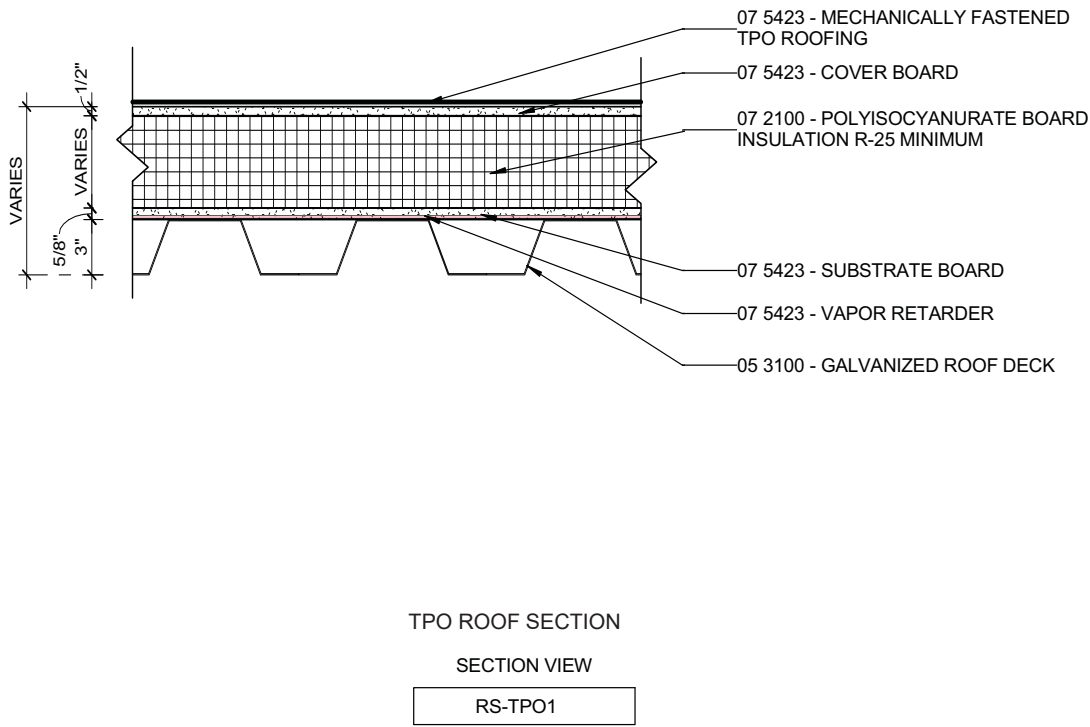
WS-STUC1

ST. VINCENT REPLACEMENT HOSPITAL
BUILDING ASSEMBLIES

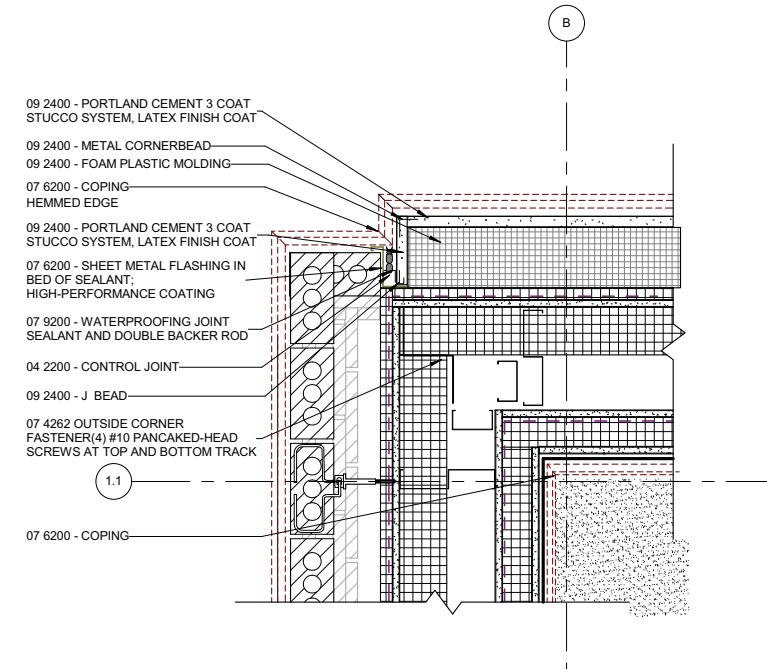
Masonry Parapet Wall Assembly



TPO Roof Assembly

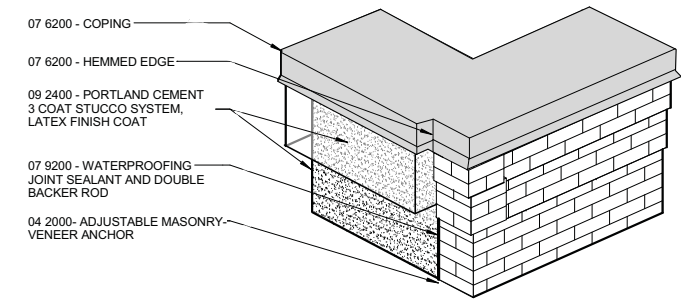


ST. VINCENT REPLACEMENT HOSPITAL DETAILS



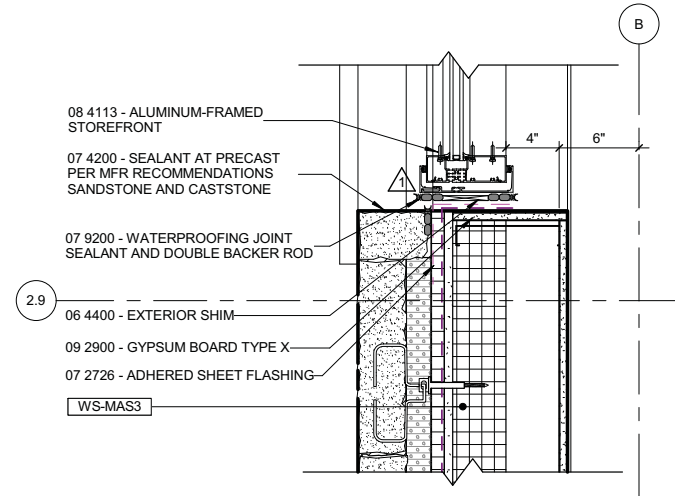
ROOF DETAIL - PWS-MAS2 & PWS- STUC 1 CORNICE

B2 1 1/2" = 1'-0"



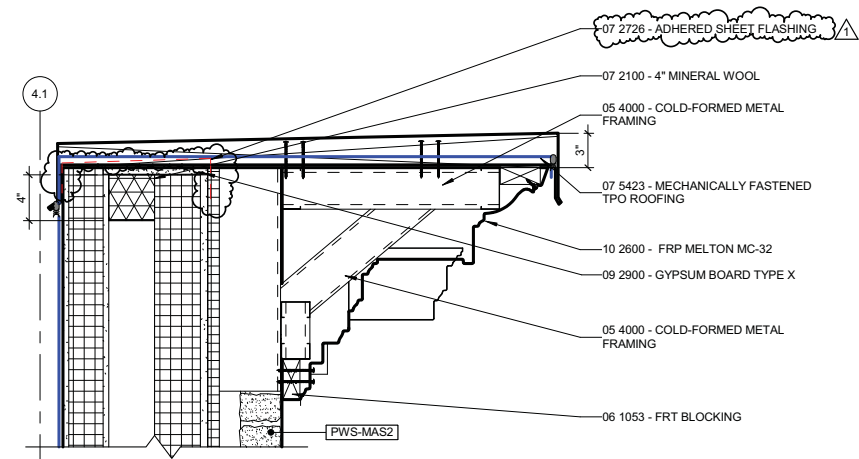
ROOF AXO DETAIL - PWS MAS 2 & PWS STUC1 CORNICE

B1



PLAN DETAIL - WAS-MAS3 STOREFRONT

A4 1 1/2" = 1'-0"



PARAPET DETAIL - PWS-MAS2 - CORNICE

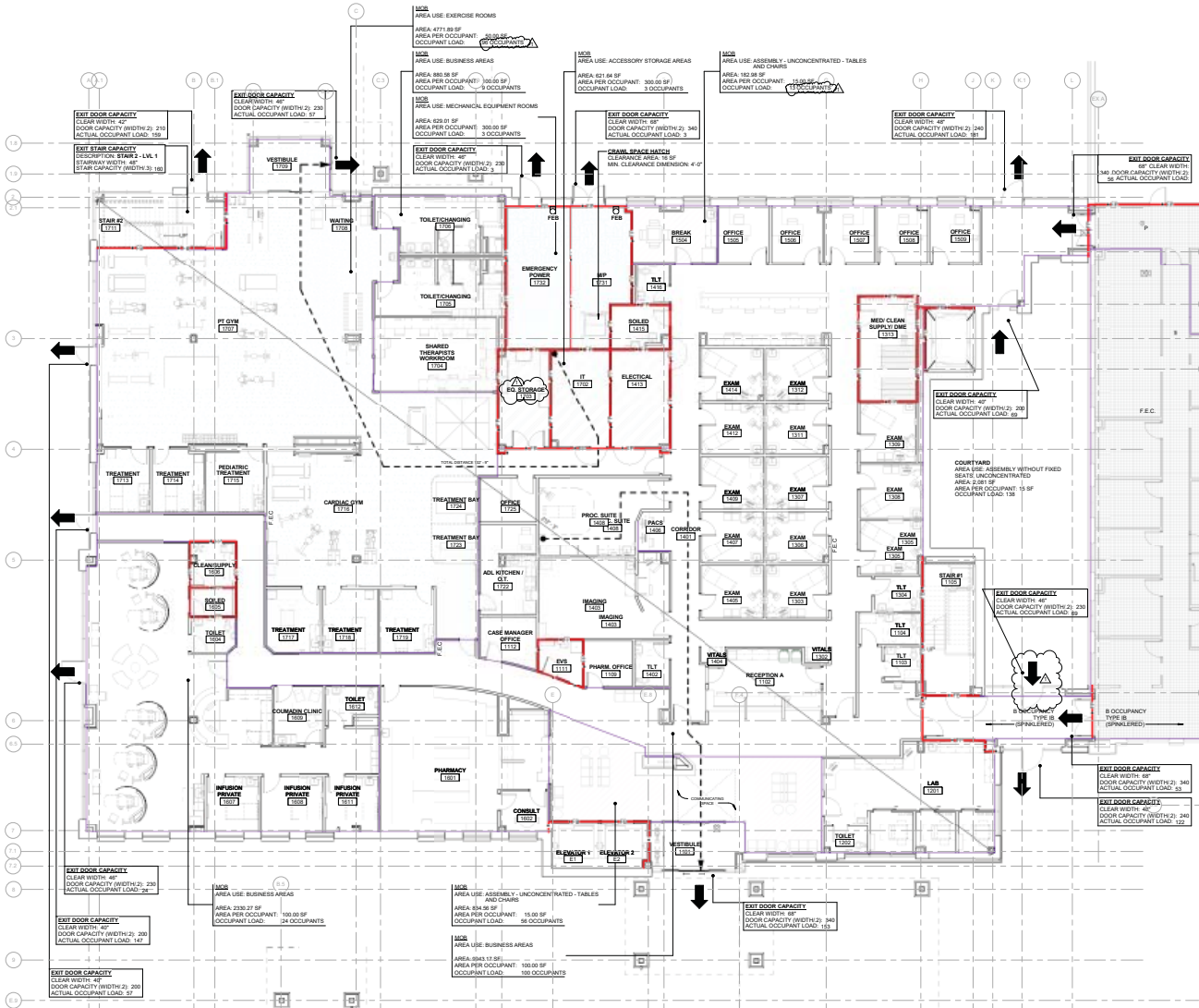
D5 1 1/2" = 1'-0"

MEMORIAL REGIONAL HEALTH - MEDICAL OFFICE BUILDING
CRAIG, COLORADO
60,000 sf

JOB RESPONSIBILITIES

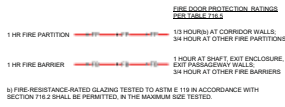
1. PAR
2. Programming / Layout
3. User Group Meetings
4. Code / Life Safety / NFPA
5. Coordinate with
 - a. Owner
 - i. USDA
 - b. User Groups
 - c. Consultants
 - d. City
6. Navisworks Collision Report
7. Construction Documents
8. Addendums
9. Construction Administration
 - a. RFIs
 - b. Submittals

OCCUPANCY GROUP	FUNCTION OF SPACE	OCCUPANT LOAD	OCCUPANCY GROUP SF
B	ACCESSORY STORAGE AREAS	3	622 SF
B	ASSEMBLY - UNCONCENTRATED - TABLES AND CHAIRS	69	618 SF
B	BUSINESS AREAS	133	614 SF
B	EXERCISE ROOMS	96	4,772 SF
B	MECHANICAL EQUIPMENT ROOMS	3	629 SF
Grand total		304	20,194 SF



1 LIFE SAFETY PLAN - LEVEL 1
1/8" = 1'-0"

LIFE SAFETY WALL TAPES









LIFE SAFETY GENERAL NOTES






1. THE EXISTING BUILDING WILL REMAIN OCCUPIED THROUGHOUT THIS PROJECT. EXIT WAYS AS REQUIRED BY APPLICABLE CODES ARE TO BE PROVIDED AND MAINTAINED IN AN UNOBSTRUCTED MANNER AT ALL TIMES. SECURITY IS TO BE PROVIDED, MAINTAINED AND COORDINATED WITH THE OWNER.
2. WHERE ANY EXISTING BUILDING ELEMENT SUCH AS A WALL, COLUMN, ROOF, ETC. IS NOTED AS HAVING AN EXISTING RATING, CONTRACTOR TO MAINTAIN RATING AS DESCRIBED IN THE DOCUMENTS EXISTS. WHERE IT DOES NOT CONFORM TO THE ASSUMED, CONTRACTOR TO NOTIFY ARCHITECT AND IMPROVE TO MEET THE REQUIRED RATING.
3. EXISTING LIFE SAFETY INFORMATION WAS PROVIDED TO THE ARCHITECTS BY THE BUILDING OWNER. DAVIS PARTNERSHIP ARCHITECTS TAKES NO RESPONSIBILITY FOR THE ACCURACY AND HAVE NOT BEEN RETAINED TO VERIFY.

LIFE SAFETY LEGEND

FIRE SAFETY COMPONENTS






	FIRE EXTINGUISHER BRACKET (COORDINATE FINAL LOCATION WITH LOCAL FIRE DEPARTMENT)
	FIRE EXTINGUISHER CABINET (COORDINATE FINAL LOCATION WITH LOCAL FIRE DEPARTMENT)
	FIRE VALVE CABINET (COORDINATE FINAL LOCATION WITH LOCAL FIRE DEPARTMENT)
	FIRE DEPARTMENT CONNECTION (COORDINATE FINAL LOCATION WITH LOCAL FIRE DEPARTMENT)
	STANDPIPE (COORDINATE FINAL LOCATION WITH LOCAL FIRE DEPARTMENT)
	HORIZONTAL EXIT CONSTRUCTED AS 2 HOUR FIRE RATED BARRIER
	HORIZONTAL SHAFTWALL ASSEMBLY ABOVE
	B OCCUPANCY (EXISTING B OCCUPANCY)

EXPRESS COMPONENTS

	LIFESAFETY NOTES
	INCIDENTAL ACCESS OCCUPANCY NOTES
	EXIT ACCESS
	EXIT DISCHARGE
	DIAGONAL DISTANCE
	EGRESS PATH OF TRAVEL

TYPE	EXIT ROUTE	DISTANCE
01 Start	Egress Path 0.1	108° - 1° 7'16"
03 End	Egress Path 0.1	89° - 4° 7'16"
Egress Path 0.1: 2		
		177° - 5° 7'16"
01 Start	Egress Path 1A	15° - 0°
02 Middle	Egress Path 1A	6° - 7° 7'16"
02 Middle	Egress Path 1A	12° - 81° 52'16"
02 Middle	Egress Path 1A	46° - 0°
02 Middle	Egress Path 1A	59° - 5° 11'52"
03 End	Egress Path 1A	22° - 14° 11'52"
Egress Path 1A: 6		
		109° - 9° 7'16"
01 Start	Egress Path 1B	18° - 3° 14"
02 Middle	Egress Path 1B	3° - 2° 28"
02 Middle	Egress Path 1B	41° - 2° 7'16"
02 Middle	Egress Path 1B	5° - 5° 11'56"
02 Middle	Egress Path 1B	23° - 10° 16'52"
03 End	Egress Path 1B	23° - 10° 16'52"
Egress Path 1B: 6		
		13° - 29° 25'52"

LIFE SAFETY USE LEGEND

-  ACCESSORY STORAGE AREAS (IBC)
-  ASSEMBLY - UNCONCENTRATED - TABLES AND CHAIRS (IBC)
-  BUSINESS AREAS (IBC)
-  EXERCISE ROOMS (IBC)
-  MECHANICAL EQUIPMENT ROOMS (IBC)

KEY PLAN

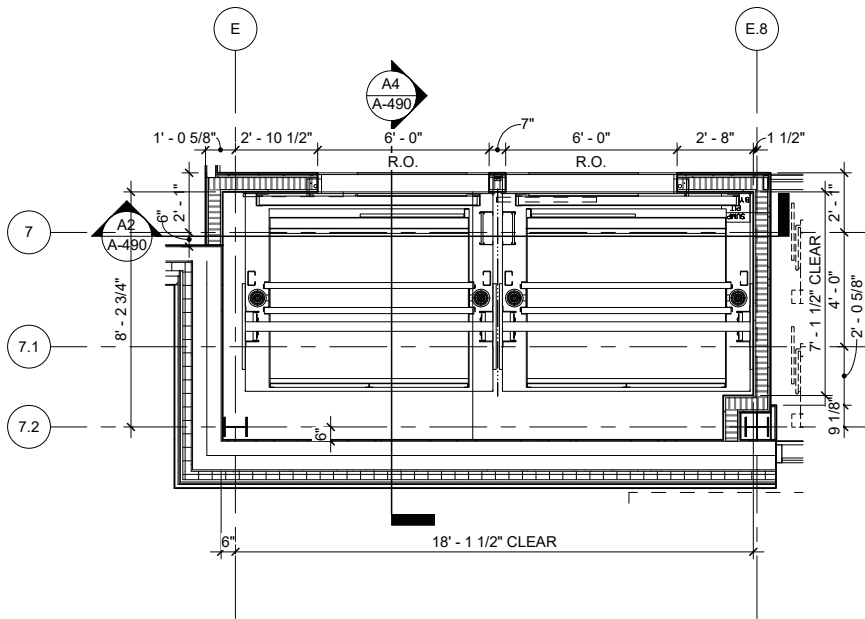


DISCLAIMER: PRINT IN COLOR
FOR FULL CONTEXT OF PLAN

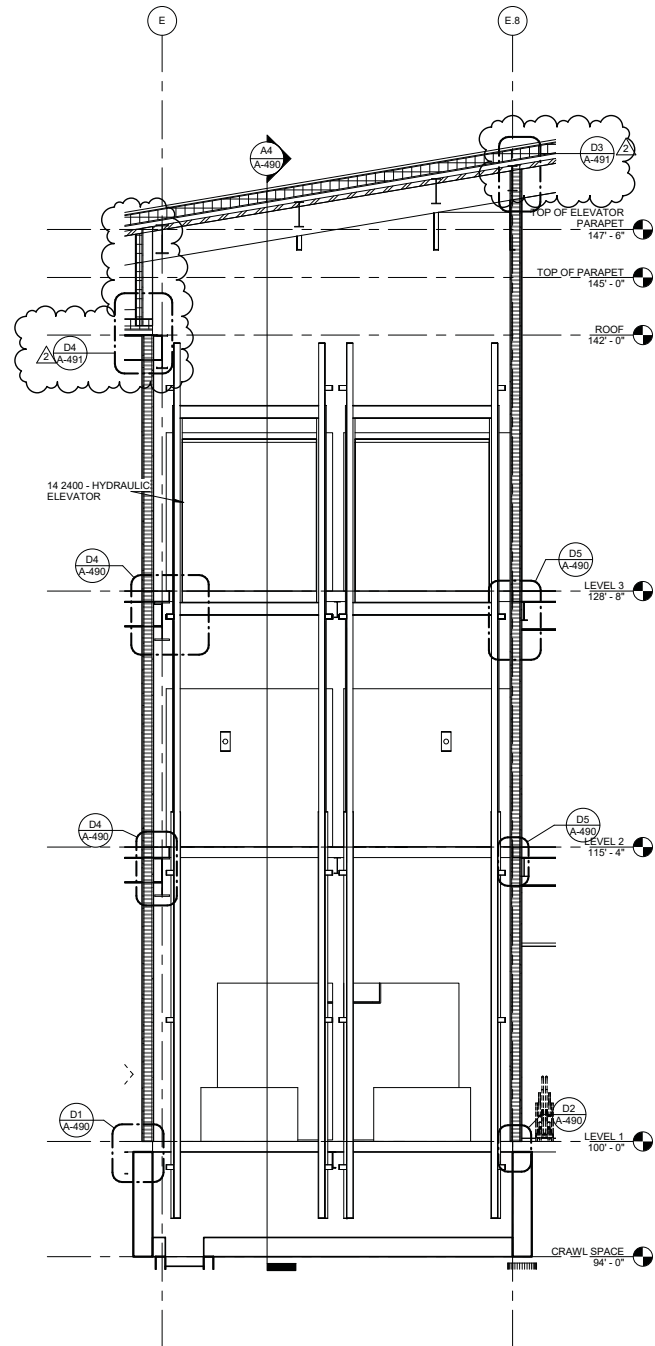
MEMORIAL REGIONAL HEALTH
INFUSION



MEMORIAL REGIONAL HEALTH
ELEVATOR COORDINATION



B6 EAST ELEVATOR LEVEL 1
1/4" = 1'-0"

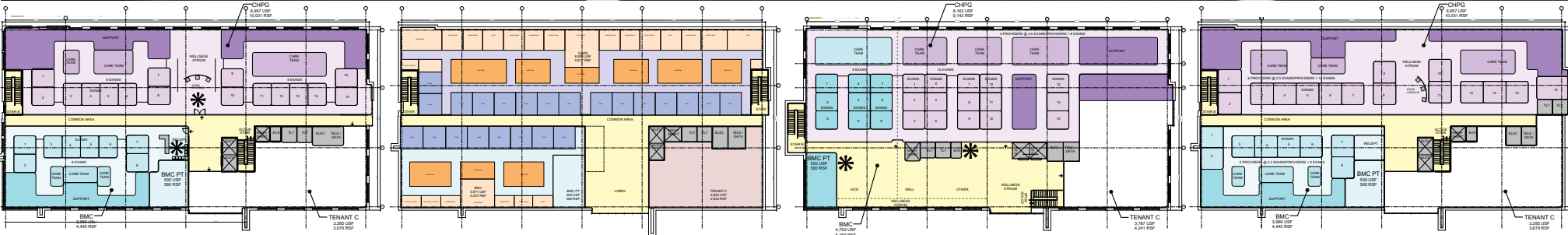


A2 3500 lb ELEVATOR SECTION 2
1/4" = 1'-0"

MEDICAL OFFICE BUILDING
ERIE, COLORADO
40,000sf

JOB RESPONSIBILITIES

- 1. Exterior Design
- 2. Programming



OTHER PROJECTS

Torrington Community Hospital - Sterile Processing- 500sf

1. Review ANSI/AAMI ST 79
2. Construction Documents for Demo and New Construction

Torrington Community Hospital - ADA Toilets -80sf

Torrington Community Hospital - GCC - 200sf

1. Construction Documents for Demo and New Construction

Lone Tree - Exam Layout

Westminster - Master Plan Layout

Englewood - Medical Office Building Exterior Concept Design

Las Animas - Medical Office Building Exterior Concept Design

Craig - OB-GYN Renovation

1. Codes, Life Safety and FGI
2. Contact for Users
3. Schematic Design, Design Development, Construction Document

Craig - Clinic Demolition

Brachy Vault / High Dose Radiation - Lean Design

1. Programming

Pine Creek - Site Plan for Marketing